



Communicating with Parents & Families

How do we communicate?

Multiple means of informing families in English, Spanish and Haitian-Creole.

- ✓ Automated text, voice & email messaging
- ✓ Digital newsletters
- ✓ Social media posts and customer service
- ✓ Editorials
- ✓ Newspaper columns
- ✓ TV
- ✓ Radio
- ✓ Digital media

Miami-Dade Schools @MDCPS · Aug 5

[#MDCPSReopening](#) important dates! From 8/24-8/28, @MDCPS families will be empowered with resources to prepare for a successful year. On 8/31, school begins using MSO. On 9/30, we will announce, based on local [#COVID19](#) conditions, if students can return to the schoolhouse on 10/5.

Timeline:

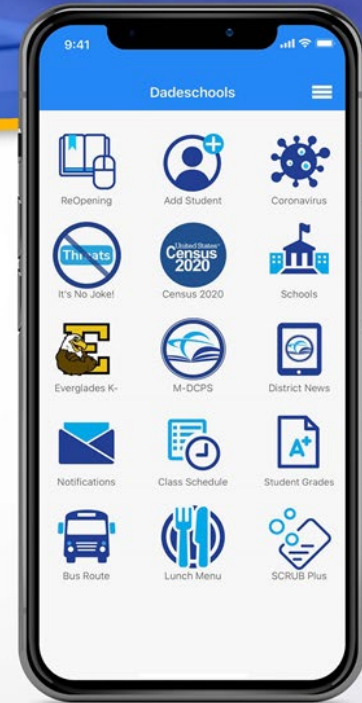
- First Day of Schooling using My School Online: **August 31**
- Target date to pivot to Schoolhouse model (based on local conditions): **October 5**

Reopen SMART Return SAFE

23 133 190

STAY CONNECTED!

Miami-Dade County Public Schools (M-DCPS) has the ability to communicate quickly and efficiently with parents through automated voice, email and text messages.



- Accurate and up-to-date contact information is critical to receiving important outreach and emergency messages from the District and your child's school.
- Communicate with your child's principal to update your contact information.
- To opt in for emergency messages, text "Y" to 67587 on your mobile device.
- The Dadeschools Mobile app is a one-stop shop for parents to receive valuable information. Download this free app on your mobile device.

FOLLOW US ON SOCIAL MEDIA FOR THE LATEST UPDATES.



Open Lines of Communication

- ✓ Support lines
- ✓ Social media customer service

Was it already determined that the schools will open on 10/05?

Sep 29, 2020, 7:23 PM

You accepted the request

Hi Angie, thank you for your message. Students will be returning to school through a staggered process with Pre-K, Kindergarten and 1st graders, and students with special needs who are on a modified curriculum, returning on Monday, October 5th. Grades 2-6 and 9-10 will return on Wednesday, October 7th while grades 7-8 and 11-12 will return on Friday, October 9th. [#MDCPS](#) Social Media Team

Sep 30, 2020, 1:49 PM ✓



HOTLINES

District Emergency Operations:



305-995-3000

Distance Learning:



305-995-HELP (4357)

Adult and Career/ Technical Education:



305-558-8000

Mental Health Services:



305-995-7100

Project UP-START:



305-995-7558

Online Resources



Reopening Plans

- JULY 29, 2020 - REOPEN SMART/RETURN SAFE
- JULY 1, 2020 - REOPENING SCHOOLS PLAN

Guiding Documents for a Comprehensive Informed Approach to Reopening Schools

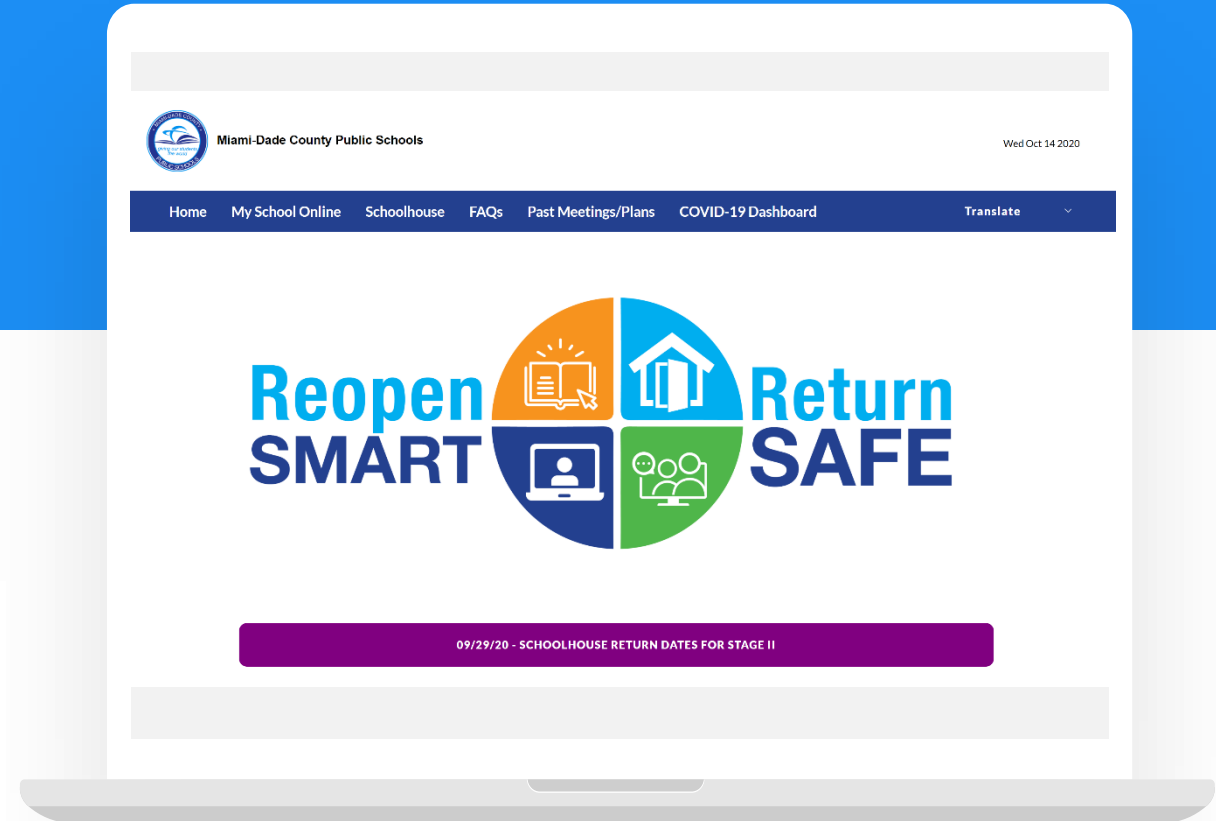
- CDC GUIDELINES
- FLORIDA GOVERNOR GUIDELINES
- FLDOE GUIDELINES
- PEDIATRICS GUIDELINES

Reopening Meetings

- SEPTEMBER 29, 2020 - SPECIAL MEETING
- SEPTEMBER 21, 2020 - SPECIAL MEETING
- SEPTEMBER 17, 2020 - PUBLIC HEALTH AND MEDICAL EXPERTS MEETING
- JULY 29, 2020 - SPECIAL MEETING
- JULY 14, 2020 - PUBLIC HEALTH AND MEDICAL EXPERTS MEETING
- JULY 1, 2020 - SPECIAL BOARD MEETING
- JUNE 26, 2020 - REOPENING WORKGROUP
- JUNE 22, 2020 - REOPENING WORKGROUP

Translate

- Translate English
- Haitian Creole
- Spanish



Comprehensive, Informed Approach to Reopening Schools

Reopening of Schools

DADESCHOOLS MOBILE APP

#MDCPSReopening



Miami-Dade County Public Schools

2020 | 2021



A GUIDE TO THE REOPENING OF MIAMI-DADE COUNTY PUBLIC SCHOOLS



Parent/Guardian's At-Home Daily Student Health Screening



We are in the midst of a pandemic, and having your child stay home when they are ill, experiencing signs and symptoms of a communicable disease, and/or when they have come into close contact with a person who has tested positive for COVID-19, is critical to minimizing the spread of illness to others. In fact, it could make the difference between disease control and outbreak.

Prior to sending your child to school each morning, parents/guardians are being asked to conduct the At-Home Daily Student Health Screening to determine if it is safe for your child to attend school.

SECTION 1 – COVID-19 EXPOSURE & SYMPTOMS

<input type="checkbox"/> Has your child tested positive for COVID-19 in the last 14 days?	<input type="checkbox"/> Yes <input type="checkbox"/> No
<input type="checkbox"/> Has your child been in close contact (within 6 feet) with someone who has a confirmed positive or pending COVID-19 diagnosis in the past 14 day?	<input type="checkbox"/> Yes <input type="checkbox"/> No
<input type="checkbox"/> Has your child or anyone in your household been tested for COVID-19 (because they were experiencing symptoms, were in close contact with someone who had tested positive for COVID-19) and are awaiting results?	<input type="checkbox"/> Yes <input type="checkbox"/> No
<input type="checkbox"/> Is your child currently ill with COVID-19?	<input type="checkbox"/> Yes <input type="checkbox"/> No

SECTION 2 – SIGNS OR SYMPTOMS – PAST 48 HOURS

Has your child experienced or is experiencing any of the following signs or symptoms listed below in the past 48 hours?

<input type="checkbox"/> Fever (100.4°F or higher)	<input type="checkbox"/> Yes <input type="checkbox"/> No
<input type="checkbox"/> Cough (New uncontrolled cough that causes difficulty breathing) (For students with chronic allergic/asthmatic cough, a change in their cough different from their baseline .)	<input type="checkbox"/> Yes <input type="checkbox"/> No
<input type="checkbox"/> Shortness of Breath	<input type="checkbox"/> Yes <input type="checkbox"/> No
<input type="checkbox"/> Fatigue	<input type="checkbox"/> Yes <input type="checkbox"/> No
<input type="checkbox"/> Muscle or Body Aches	<input type="checkbox"/> Yes <input type="checkbox"/> No
<input type="checkbox"/> Headache	<input type="checkbox"/> Yes <input type="checkbox"/> No
<input type="checkbox"/> Loss of taste or smell	<input type="checkbox"/> Yes <input type="checkbox"/> No
<input type="checkbox"/> Sore Throat	<input type="checkbox"/> Yes <input type="checkbox"/> No
<input type="checkbox"/> Congestion, runny nose	<input type="checkbox"/> Yes <input type="checkbox"/> No
<input type="checkbox"/> Nausea	<input type="checkbox"/> Yes <input type="checkbox"/> No
<input type="checkbox"/> Vomiting	<input type="checkbox"/> Yes <input type="checkbox"/> No
<input type="checkbox"/> Diarrhea	<input type="checkbox"/> Yes <input type="checkbox"/> No
<input type="checkbox"/> Other: Rash, Red Eyes, Cracked/Swollen lips, Red Swollen Tongue, Swelling hands/ feet, stomach pain	<input type="checkbox"/> Yes <input type="checkbox"/> No

SECTION 3 – TEMPERATURE CHECK

What is your child's current temperature this morning? _____

SECTION 4 – NEXT STEPS – IF YOUR CHILD HAS ANY OF THE ABOVE-MENTIONED SYMPTOMS

<input type="checkbox"/> If you answer "yes" to any of the above, or your child's temperature is 100.4 °F (37.5°C) or higher, please do not send your child to school.	
<input type="checkbox"/> You should contact your child's health care provider immediately. DON'T WAIT FOR SYMPTOMS TO WORSEN!	
<input type="checkbox"/> Having these symptoms alone does not mean that your child has a contagious disease or has the virus, but ONLY a health care provider can determine that.	
<input type="checkbox"/> Notify the principal at your child's school of their symptoms.	

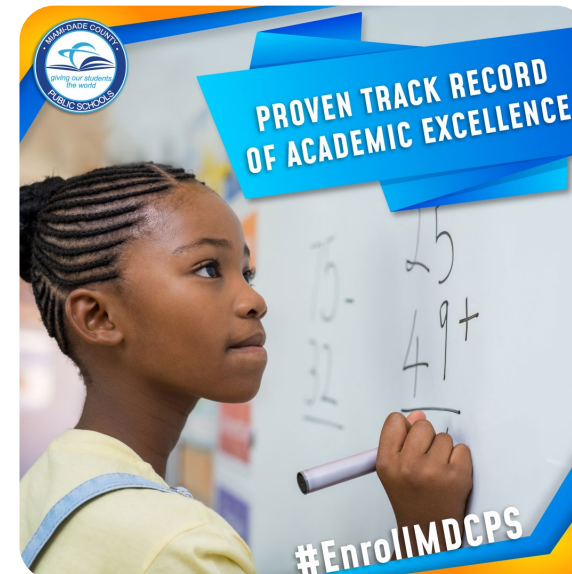
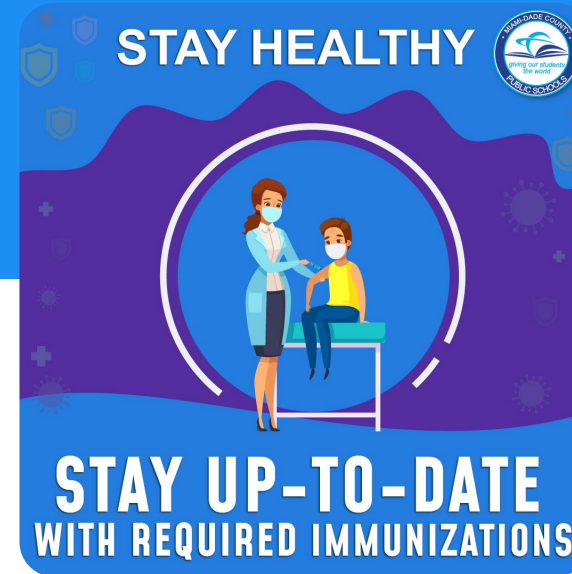
SECTION 5 – GUIDANCE FOR PARENTS/GUARDIANS

- Keep your child home if they are ill, and they should remain home for:**
 - At least three days (72 hours) have passed *since symptoms have resolved*;
 - Free of fever **without** the use of fever-reducing medications;
 - Improvement in respiratory symptoms (e.g., cough, shortness of breath); **and/or** at least 10 days have passed *since symptoms first appeared*;
 - Continue practice health hygiene, handwashing, face covering, maintaining appropriate distance/space.

What/When do we communicate?

Launched several awareness campaigns to ensure that families are prepared for the transition back to school.

- ✓ Importance of vaccinations
- ✓ Staying healthy
- ✓ School enrollment
- ✓ Reopening of Schools
- ✓ Week of Welcome



Return to the Schoolhouse

Back-to-Schoolhouse CHECKLIST



REGISTRATION

Families can still register their children for the 2020-2021 school year. For more information, visit <http://attendanceservices.dadeschools.net/>.

RETURN TO THE SCHOOLHOUSE MODEL

Beginning Monday, October 5th, students whose parents selected the Schoolhouse model, will be returning to school five days a week through a staggered schedule:

- Pre-K, Kindergarten and 1st graders, as well as students with special needs who are on a modified curriculum in separate classrooms, begin on Monday, October 5th
- Grades 2-6 and 9-10 begin on Wednesday, October 7th
- Grades 7-8 and 11-12 begin on Friday, October 9th

Prior to sending their child to school each morning, parents/guardians are being asked to conduct the At-Home Daily Student Health Screening, found at reopening.dadeschools.net, to determine if it is safe for their child to attend school.

NOTIFICATION PROCESS

Parents are receiving a notification card in the mail, to serve as a reminder of which learning model they selected during the July opt-in period. Parents may also review their selection through their child's Student Portal or the Dadeschools Mobile app. Students should be ready to present these notification cards or show the mobile app/Student Portal information to physically enter their schools on their assigned return date.

UNIFORMS AND FACIAL COVERINGS

The uniform policy will be enforced, and facial coverings will be required in the Schoolhouse Model when on school board property, at a school board activity, riding a bus or in other approved transportation. Facial coverings must be made from a minimum of double layer cloth and be snug fitting to cover both the nose and mouth. Facial coverings should not include any type of exhalation valves or vents or masks designed as a costume. If your child needs a facial covering, please contact your child's principal.

HANDWASHING/SANITIZING STATIONS

Frequent handwashing will be encouraged. Hand sanitizing stations will be available in high-traffic areas in schools, including classrooms, and on the school bus. If a student leaves the room during a class period, they will be expected to wash their hands or use hand sanitizer prior to returning to the classroom.

MEALS/WATER

All students will have access to free breakfast and lunch until the end of December. Students who are attending in person will eat their meals in the cafeteria, classroom or another designated area, based on school-specific plans. Student identification badges will now be scanned for meal accountability, eliminating the use of keypads. Students attending MSO will continue to pick up multiple meals on Tuesdays and Thursdays from 4-5:30 p.m. Water fountains have been disabled at all schools. Water bottle filling stations will be available.

Back-to-Schoolhouse CHECKLIST



TRANSPORTATION

Students who are eligible for District transportation services will be provided information as part of the mailed notification. Parents can also check the Dadeschools Mobile app and the Student Portal for bus route information. Strategies such as reducing bus capacity, requiring facial coverings while riding the bus, and reconfiguring bus routes to maintain reliable transportation will be implemented. Hand sanitizing stations will be available on every school bus. School buses will also be sanitized daily and between morning and afternoon routes.

SCHOOL SUPPLIES

Parents should check their child's school website or contact their child's teachers for a supplies list. Students are asked to bring reusable water bottles daily.

DEVICES

Every single student needs a device. If your child does not have one, please contact their school. For the Schoolhouse model, individual teachers will determine when there is a need for students to bring in their devices. Be sure devices are charged every night.

CONTACT INFORMATION

M-DCPS has the ability to communicate accurately and efficiently with parents through voice, text, and email messages. It's important that your child's school has the most current contact information. Parents can update their details by contacting their child's principal. They may also opt in for emergency text messages by texting "Y" to 67587 on their mobile device.

DADESCHOOLS MOBILE APP

The Dadeschools Mobile app is a one-stop shop for parents. Access important information including class schedules, school grades, District news and much more. Download this free app to your iPhone or Android device.

IMMUNIZATIONS AND FLU VACCINE

Parents are urged to check their children's immunization records to see if they are due for any mandated school entry vaccines. All M-DCPS students are required to have the mandatory school age vaccines for the 2020-2021 school year, including those participating exclusively via My School Online (MSO). Additionally, as recommended by the Centers for Disease Control, the best way to prevent the seasonal flu is to get an annual flu vaccine.

HOTLINES

General Support Help Desk: 305-995-3000
Distance Learning: 305-995-HELP (4357)
Adult and Career/Technical Education:
305-558-8000

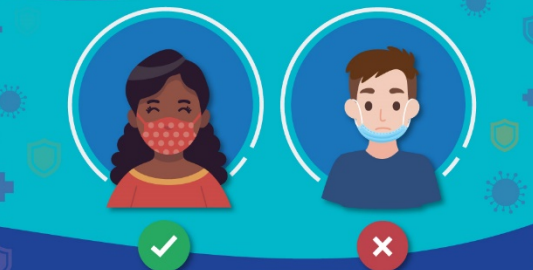
Mental Health Services for students/parents: 305-995-7100
Project UP-START for students experiencing unstable housing: 305-995-7558

BE COOL IN SCHOOL



**WASH YOUR HANDS OFTEN
OR USE HAND SANITIZER**
APPLY SOAP AND SCRUB HANDS
FOR 20 SECONDS, RINSE AND DRY

BE COOL IN SCHOOL



**A FACE COVERING OR MASK
MUST BE WORN AT ALL TIMES TO
COVER YOUR MOUTH AND NOSE**

Communicating a Pivot to Online Learning



All in-person instruction at [INSERT SCHOOL NAME] will pivot to online learning from home on [INSERT DATE].



Hello. This is [INSERT NAME], principal of [INSERT SCHOOL NAME] calling with an important message. Miami-Dade County Public Schools is working with the Florida Department of Health in Miami-Dade County on two self-reported cases of COVID-19 at our school. In an abundance of caution and after consultation with the health department, on [INSERT DATE], the entire school will pivot to online instruction to ensure that those who came in close contact with these individuals are identified and that all buildings in our school are thoroughly sanitized. Students and teachers should not report to school and instead engage in teaching and learning remotely following their regular schedule. Additional information will be provided. As always, we will continue to prioritize the health and wellbeing of our students and employees. Should you have any questions, please contact the front office.



coralparkelementary
Coral Park Elementary School

CORAL PARK ELEMENTARY SCHOOL IMPORTANT NEWS FOR WEDNESDAY, OCTOBER 14TH

Two Coral Park Elementary individuals tested positive for COVID-19. In-person instruction will pivot to online learning from home on Wednesday, October 14th to ensure that those who had direct contact are notified and to allow for thorough sanitization of school.

Dos individuos de Coral Park Elementary dieron positivo al COVID-19. La instrucción en persona pasará al aprendizaje en línea desde casa el miércoles 14 de octubre para permitir que las personas que estuvieron en contacto directo sean notificadas y para limpiar a fondo nuestro plantel



82 likes

coralparkelementary @coralparkelementary @prekcoralpark very important information. Today, October 14th CPE will pivot to online learning. @cro_mdcp @martaperez456 @mdcpscommunity

6 hours ago

How can the community stay informed?



STAY CONNECTED!



@MDCPS
@EscuelasMDCPS
@MiamiSup



@MiamiSchools
@AlbertoMCarvalho1



@MiamiSchools
@MiamiSup



@MiamiSchools